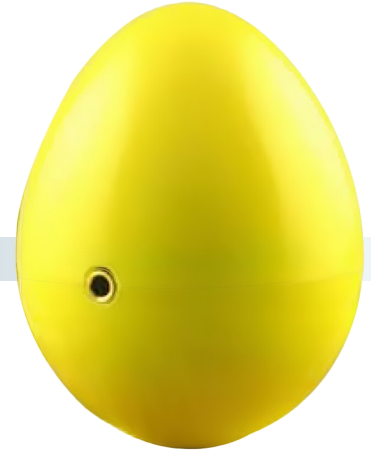


Egg Logger

The Junior Egg Logger is designed to measure egg temperatures in cartons during transportation and storage or during the incubation process. It can also be used in any other application that prohibits the use of other loggers due to size requirements.



Applications

- Transportation of eggs
- Storage of eggs
- Monitoring of nests and hatcheries

Specifications

Description	Specifications
Product Code	EJ-EG-B-16
Temperature Range	-20 °C to +60 °C (-4 °F to +140 °F)
Sensors	Internal sensor only
Accuracy	± 0.3 °C (± 0.6 °F)
Resolution	0.3 °C (0.6 °F)
Memory	16,000 readings
Software	Console Pro
Security	Password protection with Console Pro Software (program and / or download)
Program Interval	5 seconds to 255 minutes
Start-up	Programmed time and date or magnet swipe
IP Rating	IP51
Sensor Response Time	T90 of 12 Minutes in moving air
Time Accuracy	Better than 40 seconds per month at ambient
Size	45mm max diameter; 59mm height
Storage Temperature	-40 °C to +85 °C (-40 °F to +185 °F)
Case Material	Acetyl
Weight	77 grams
Warranty	2 Years



Certifications:

**2
Year
Warranty**

bsi.

21 CFR Part 11

CE

**NIST
Traceable**

For more information call us at 732-346-9200 x131, x150 or visit us at cryopak.com

Interface & Accessories



Junior Egg Interface
Product Code: MN-INT-E

Connects the Junior Egg Logger to a PC or chart reader via serial port



USB to Serial Port Adapter
Product Code: EA-USB-SER

Adapts standard serial port interface to a USB type interface

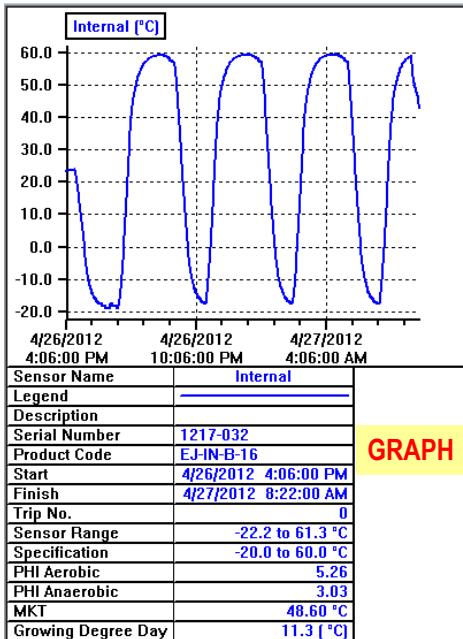


Magnetic Key Ring
Product Code: EA-KEY

Used when starting the logger as well as time/date stamping to place a bookmark on the reading

Console Pro Software

- Program and configure logger
- Download & view data analysis
- Export data in CSV & TXT format
- Re-arm function
- Password protected
- MKT, PHI & Growing Degree Day
- CFR 21 part 11



GRAPH

Index	Elapsed Time	Date	Time	Internal [°C]
Serial Number				1217-032
H/w version				2.4e
Trip No.				0
Description				
Battery				OK
Start		4/26/2012	4:06:00 PM	
Finish		4/27/2012	8:22:00 AM	
Sampling				1 Minute
Readings				977 (976 Minutes)
Active				-22.2 to 61.3 °C
Specification				-20.0 to 60.0 °C
Average				26.7
Highest				59.8
Lowest				-18.8
PHI Aerobic				5.26
PHI Anaerobic				3.03
MKT				48.60
Growing Degree Day				11.4
Out Of Specification				None
1	00:00:00	4/26/2012	4:06:00 PM	23.2
2	00:01:00	4/26/2012	4:07:00 PM	23.5
3	00:02:00	4/26/2012	4:08:00 PM	23.5
4	00:03:00	4/26/2012	4:09:00 PM	23.7
5	00:04:00	4/26/2012	4:10:00 PM	23.7
6	00:05:00	4/26/2012	4:11:00 PM	23.7
7	00:06:00	4/26/2012	4:12:00 PM	23.7
8	00:07:00	4/26/2012	4:13:00 PM	23.7
9	00:08:00	4/26/2012	4:14:00 PM	23.7

Readings & Summary

