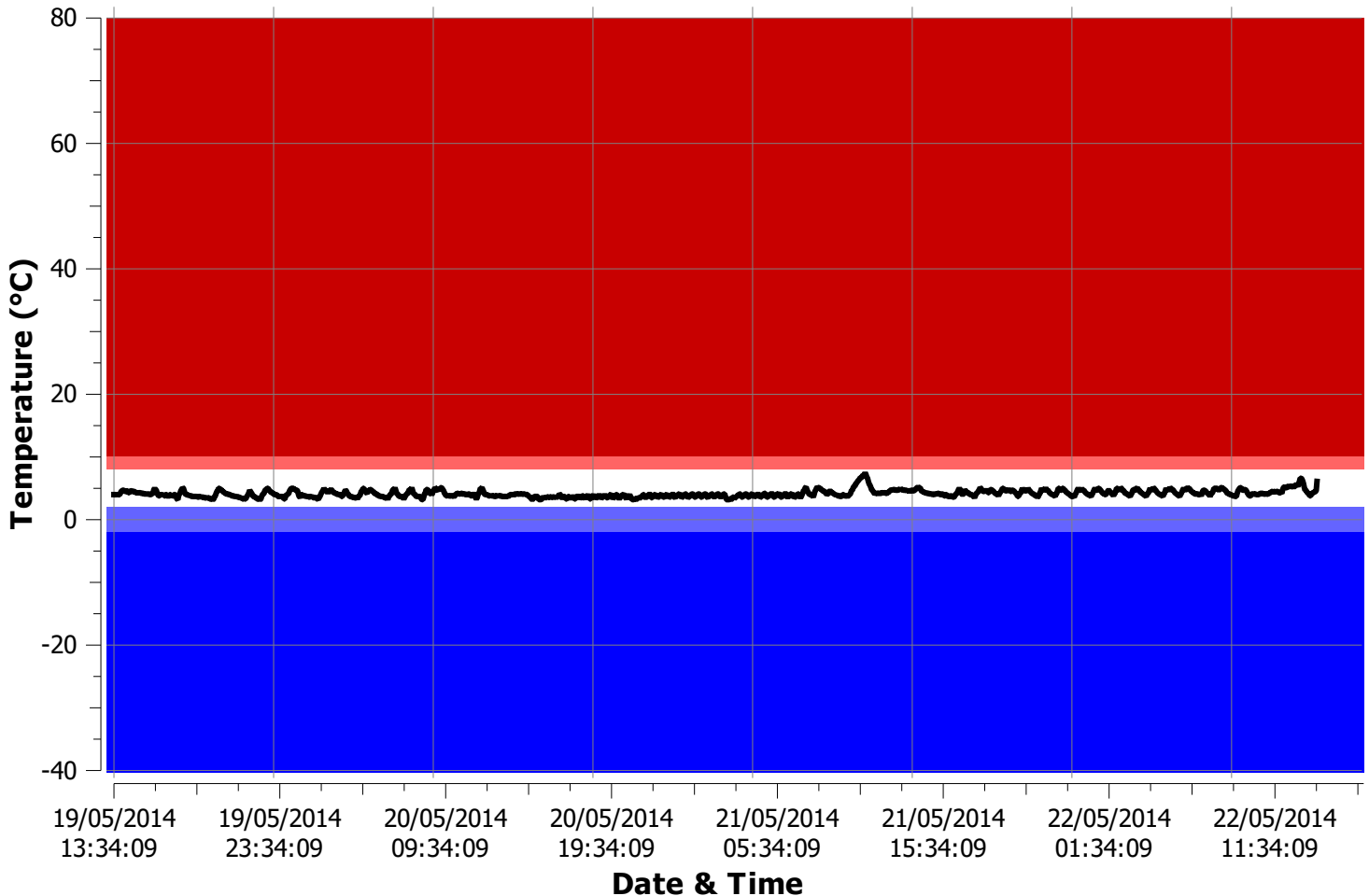


Device Specification

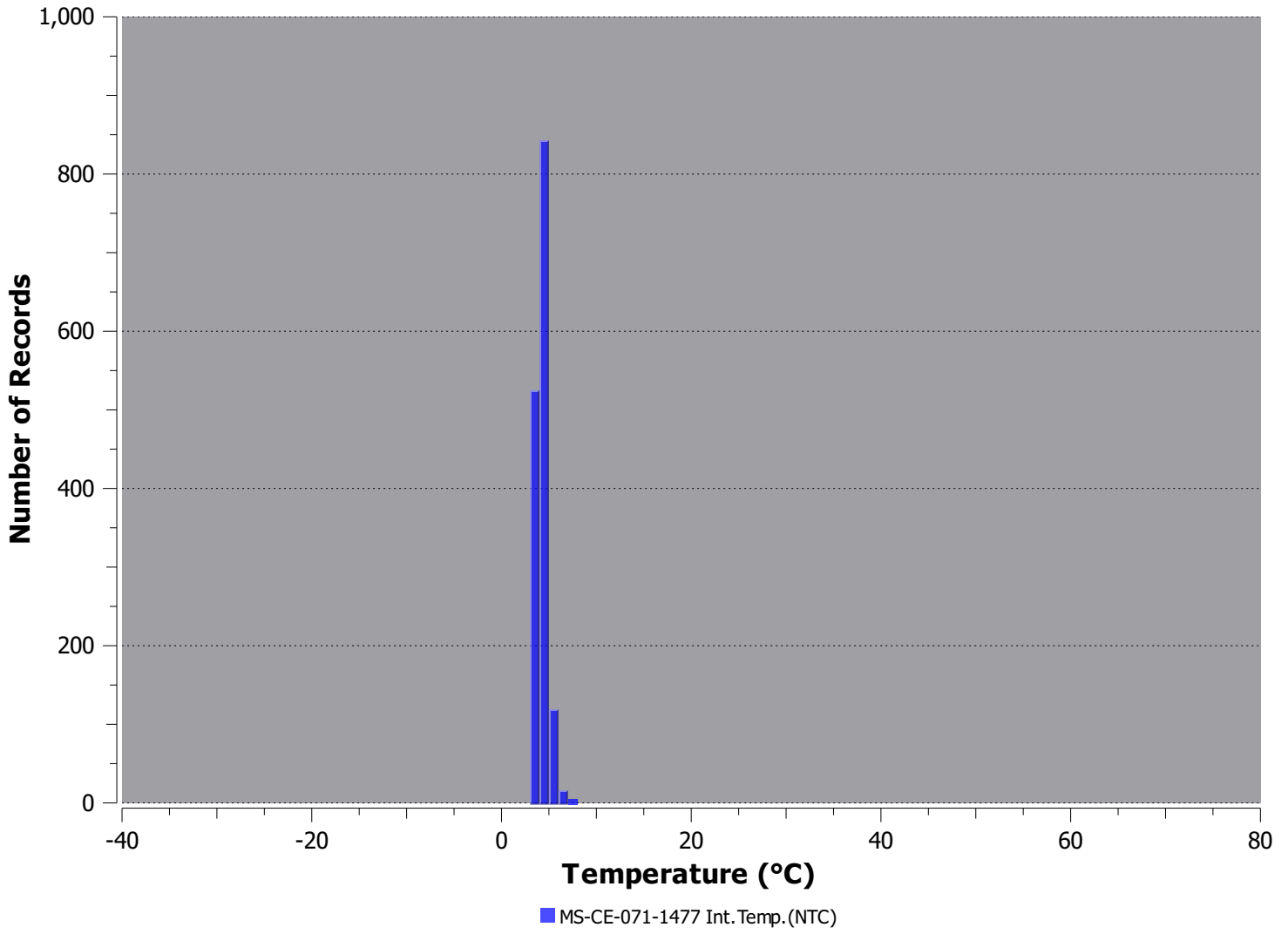
Serial	MS-CE-071-1477
Product Code	MS-ST-S-8-P
Firmware / ConsolePlus Version	iMinuUSB Ver_02_08 / ConsolePlus:1.15.68
Mem. Size	7.5K Rec.
Temperature	-40/+80 (°C)
Battery	High
Trip #	1
Description	DL 1
Unit Mode Programmed	Celsius (°C)
Program: Start At:	-
Program: Start button after:	00d 01:00
Program: Stop At:	-
Program: Stop after # records:	7928
Program: Interval:	00h03m00s
Program: Continuous Logging:	-
Program: Stop button enabled:	Yes
Program: Stop after # records:	-
Program: Memory Used:	19%
Number of Records	1508
Started Time:	19/05/2014 13:34:09
Stopped Time:	22/05/2014 16:55:09
Configured / Downloaded by	#111607272: / #111607264:

MS-CE-071-1477 MS-ST-S-8-P



Alarms **Int. Temp.**

Alarm HH	10.0 (°C)
Alarm H	8.0 (°C)
Alarm L	2.0 (°C)
Alarm LL	-2.0 (°C)
Consecutive alarm delay	1
Total alarm delay	1
out of specification HH	00h00m00s
out of specification H	00h00m00s
out of specification L	00h00m00s
out of specification LL	00h00m00s
Value Max:	7.5 (°C)
Value Avg:	4.1 (°C)
Value Min:	3.1 (°C)
MKT (83.144 kJ/mol)	4.2 (°C)



#	Date	Time	T°C	H%	eT°C	#	Date	Time	T°C	H%	eT°C
1	19/05/14	13:34:09	4.0			51	19/05/14	16:04:09	4.8		
2	19/05/14	13:37:09	4.0			52	19/05/14	16:07:09	5.0		
3	19/05/14	13:40:09	4.0			53	19/05/14	16:10:09	4.8		
4	19/05/14	13:43:09	4.0			54	19/05/14	16:13:09	4.7		
5	19/05/14	13:46:09	3.8			55	19/05/14	16:16:09	4.3		
6	19/05/14	13:49:09	4.0			56	19/05/14	16:19:09	4.0		
7	19/05/14	13:52:09	4.0			57	19/05/14	16:22:09	3.8		
8	19/05/14	13:55:09	4.0			58	19/05/14	16:25:09	3.8		
9	19/05/14	13:58:09	4.2			59	19/05/14	16:28:09	4.0		
10	19/05/14	14:01:09	4.5			60	19/05/14	16:31:09	4.0		
11	19/05/14	14:04:09	4.6			61	19/05/14	16:34:09	3.8		
12	19/05/14	14:07:09	4.7			62	19/05/14	16:37:09	4.0		
13	19/05/14	14:10:09	4.7			63	19/05/14	16:40:09	4.1		
14	19/05/14	14:13:09	4.6			64	19/05/14	16:43:09	3.8		
15	19/05/14	14:16:09	4.5			65	19/05/14	16:46:09	3.8		
16	19/05/14	14:19:09	4.5			66	19/05/14	16:49:09	4.0		
17	19/05/14	14:22:09	4.6			67	19/05/14	16:52:09	4.0		
18	19/05/14	14:25:09	4.6			68	19/05/14	16:55:09	3.8		
19	19/05/14	14:28:09	4.3			69	19/05/14	16:58:09	3.7		
20	19/05/14	14:31:09	4.3			70	19/05/14	17:01:09	3.8		
21	19/05/14	14:34:09	4.5			71	19/05/14	17:04:09	4.0		
22	19/05/14	14:37:09	4.6			72	19/05/14	17:07:09	4.0		
23	19/05/14	14:40:09	4.6			73	19/05/14	17:10:09	3.7		
24	19/05/14	14:43:09	4.5			74	19/05/14	17:13:09	3.8		
25	19/05/14	14:46:09	4.5			75	19/05/14	17:16:09	3.8		
26	19/05/14	14:49:09	4.5			76	19/05/14	17:19:09	4.0		
27	19/05/14	14:52:09	4.5			77	19/05/14	17:22:09	4.0		
28	19/05/14	14:55:09	4.3			78	19/05/14	17:25:09	4.0		
29	19/05/14	14:58:09	4.3			79	19/05/14	17:28:09	3.6		
30	19/05/14	15:01:09	4.5			80	19/05/14	17:31:09	3.3		
31	19/05/14	15:04:09	4.3			81	19/05/14	17:34:09	3.2		
32	19/05/14	15:07:09	4.2			82	19/05/14	17:37:09	3.8		
33	19/05/14	15:10:09	4.3			83	19/05/14	17:40:09	4.1		
34	19/05/14	15:13:09	4.3			84	19/05/14	17:43:09	4.3		
35	19/05/14	15:16:09	4.2			85	19/05/14	17:46:09	4.7		
36	19/05/14	15:19:09	4.2			86	19/05/14	17:49:09	4.8		
37	19/05/14	15:22:09	4.2			87	19/05/14	17:52:09	5.1		
38	19/05/14	15:25:09	4.2			88	19/05/14	17:55:09	5.0		
39	19/05/14	15:28:09	4.1			89	19/05/14	17:58:09	4.6		
40	19/05/14	15:31:09	4.1			90	19/05/14	18:01:09	4.2		
41	19/05/14	15:34:09	4.1			91	19/05/14	18:04:09	4.0		
42	19/05/14	15:37:09	4.1			92	19/05/14	18:07:09	4.0		
43	19/05/14	15:40:09	4.1			93	19/05/14	18:10:09	4.0		
44	19/05/14	15:43:09	4.1			94	19/05/14	18:13:09	4.0		
45	19/05/14	15:46:09	4.1			95	19/05/14	18:16:09	3.7		
46	19/05/14	15:49:09	4.0			96	19/05/14	18:19:09	3.8		
47	19/05/14	15:52:09	4.0			97	19/05/14	18:22:09	3.8		
48	19/05/14	15:55:09	4.1			98	19/05/14	18:25:09	3.8		
49	19/05/14	15:58:09	4.1			99	19/05/14	18:28:09	3.7		
50	19/05/14	16:01:09	4.3			100	19/05/14	18:31:09	3.7		

#	Date	Time	T°C	H%	eT°C	#	Date	Time	T°C	H%	eT°C
101	19/05/14	18:34:09	3.8			151	19/05/14	21:04:09	3.8		
102	19/05/14	18:37:09	3.7			152	19/05/14	21:07:09	3.7		
103	19/05/14	18:40:09	3.7			153	19/05/14	21:10:09	3.7		
104	19/05/14	18:43:09	3.7			154	19/05/14	21:13:09	3.7		
105	19/05/14	18:46:09	3.7			155	19/05/14	21:16:09	3.7		
106	19/05/14	18:49:09	3.6			156	19/05/14	21:19:09	3.6		
107	19/05/14	18:52:09	3.6			157	19/05/14	21:22:09	3.6		
108	19/05/14	18:55:09	3.7			158	19/05/14	21:25:09	3.6		
109	19/05/14	18:58:09	3.7			159	19/05/14	21:28:09	3.5		
110	19/05/14	19:01:09	3.5			160	19/05/14	21:31:09	3.5		
111	19/05/14	19:04:09	3.6			161	19/05/14	21:34:09	3.6		
112	19/05/14	19:07:09	3.6			162	19/05/14	21:37:09	3.3		
113	19/05/14	19:10:09	3.6			163	19/05/14	21:40:09	3.3		
114	19/05/14	19:13:09	3.5			164	19/05/14	21:43:09	3.5		
115	19/05/14	19:16:09	3.5			165	19/05/14	21:46:09	3.3		
116	19/05/14	19:19:09	3.5			166	19/05/14	21:49:09	3.3		
117	19/05/14	19:22:09	3.5			167	19/05/14	21:52:09	3.6		
118	19/05/14	19:25:09	3.3			168	19/05/14	21:55:09	3.8		
119	19/05/14	19:28:09	3.5			169	19/05/14	21:58:09	4.0		
120	19/05/14	19:31:09	3.5			170	19/05/14	22:01:09	4.3		
121	19/05/14	19:34:09	3.3			171	19/05/14	22:04:09	4.7		
122	19/05/14	19:37:09	3.3			172	19/05/14	22:07:09	4.5		
123	19/05/14	19:40:09	3.3			173	19/05/14	22:10:09	4.3		
124	19/05/14	19:43:09	3.3			174	19/05/14	22:13:09	4.1		
125	19/05/14	19:46:09	3.2			175	19/05/14	22:16:09	3.8		
126	19/05/14	19:49:09	3.3			176	19/05/14	22:19:09	3.7		
127	19/05/14	19:52:09	3.7			177	19/05/14	22:22:09	3.6		
128	19/05/14	19:55:09	3.8			178	19/05/14	22:25:09	3.6		
129	19/05/14	19:58:09	4.2			179	19/05/14	22:28:09	3.6		
130	19/05/14	20:01:09	4.5			180	19/05/14	22:31:09	3.3		
131	19/05/14	20:04:09	4.6			181	19/05/14	22:34:09	3.3		
132	19/05/14	20:07:09	5.0			182	19/05/14	22:37:09	3.5		
133	19/05/14	20:10:09	5.0			183	19/05/14	22:40:09	3.3		
134	19/05/14	20:13:09	4.8			184	19/05/14	22:43:09	3.2		
135	19/05/14	20:16:09	4.8			185	19/05/14	22:46:09	3.3		
136	19/05/14	20:19:09	4.7			186	19/05/14	22:49:09	3.7		
137	19/05/14	20:22:09	4.5			187	19/05/14	22:52:09	4.0		
138	19/05/14	20:25:09	4.5			188	19/05/14	22:55:09	4.1		
139	19/05/14	20:28:09	4.3			189	19/05/14	22:58:09	4.2		
140	19/05/14	20:31:09	4.3			190	19/05/14	23:01:09	4.6		
141	19/05/14	20:34:09	4.1			191	19/05/14	23:04:09	4.8		
142	19/05/14	20:37:09	4.1			192	19/05/14	23:07:09	4.8		
143	19/05/14	20:40:09	4.1			193	19/05/14	23:10:09	5.0		
144	19/05/14	20:43:09	4.1			194	19/05/14	23:13:09	5.0		
145	19/05/14	20:46:09	4.0			195	19/05/14	23:16:09	4.8		
146	19/05/14	20:49:09	4.0			196	19/05/14	23:19:09	4.6		
147	19/05/14	20:52:09	4.0			197	19/05/14	23:22:09	4.5		
148	19/05/14	20:55:09	3.8			198	19/05/14	23:25:09	4.3		
149	19/05/14	20:58:09	3.8			199	19/05/14	23:28:09	4.3		
150	19/05/14	21:01:09	3.8			200	19/05/14	23:31:09	4.3		

#	Date	Time	T°C	H%	eT°C	#	Date	Time	T°C	H%	eT°C
201	19/05/14	23:34:09	4.1			251	20/05/14	02:04:09	3.6		
202	19/05/14	23:37:09	4.0			252	20/05/14	02:07:09	3.5		
203	19/05/14	23:40:09	4.0			253	20/05/14	02:10:09	3.3		
204	19/05/14	23:43:09	4.0			254	20/05/14	02:13:09	3.5		
205	19/05/14	23:46:09	4.0			255	20/05/14	02:16:09	3.5		
206	19/05/14	23:49:09	3.8			256	20/05/14	02:19:09	3.3		
207	19/05/14	23:52:09	3.7			257	20/05/14	02:22:09	3.2		
208	19/05/14	23:55:09	3.6			258	20/05/14	02:25:09	3.6		
209	19/05/14	23:58:09	3.7			259	20/05/14	02:28:09	3.7		
210	20/05/14	00:01:09	3.7			260	20/05/14	02:31:09	4.0		
211	20/05/14	00:04:09	3.7			261	20/05/14	02:34:09	4.3		
212	20/05/14	00:07:09	3.7			262	20/05/14	02:37:09	4.5		
213	20/05/14	00:10:09	3.6			263	20/05/14	02:40:09	4.7		
214	20/05/14	00:13:09	3.3			264	20/05/14	02:43:09	5.0		
215	20/05/14	00:16:09	3.3			265	20/05/14	02:46:09	4.8		
216	20/05/14	00:19:09	3.7			266	20/05/14	02:49:09	4.7		
217	20/05/14	00:22:09	4.0			267	20/05/14	02:52:09	4.6		
218	20/05/14	00:25:09	4.0			268	20/05/14	02:55:09	4.5		
219	20/05/14	00:28:09	4.1			269	20/05/14	02:58:09	4.2		
220	20/05/14	00:31:09	4.2			270	20/05/14	03:01:09	4.5		
221	20/05/14	00:34:09	4.6			271	20/05/14	03:04:09	4.7		
222	20/05/14	00:37:09	4.8			272	20/05/14	03:07:09	4.7		
223	20/05/14	00:40:09	5.0			273	20/05/14	03:10:09	4.8		
224	20/05/14	00:43:09	5.0			274	20/05/14	03:13:09	4.7		
225	20/05/14	00:46:09	5.0			275	20/05/14	03:16:09	4.5		
226	20/05/14	00:49:09	5.0			276	20/05/14	03:19:09	4.3		
227	20/05/14	00:52:09	4.8			277	20/05/14	03:22:09	4.3		
228	20/05/14	00:55:09	4.8			278	20/05/14	03:25:09	4.3		
229	20/05/14	00:58:09	4.7			279	20/05/14	03:28:09	4.1		
230	20/05/14	01:01:09	4.7			280	20/05/14	03:31:09	4.1		
231	20/05/14	01:04:09	4.6			281	20/05/14	03:34:09	4.1		
232	20/05/14	01:07:09	4.1			282	20/05/14	03:37:09	4.0		
233	20/05/14	01:10:09	3.7			283	20/05/14	03:40:09	4.0		
234	20/05/14	01:13:09	3.6			284	20/05/14	03:43:09	4.0		
235	20/05/14	01:16:09	3.8			285	20/05/14	03:46:09	4.0		
236	20/05/14	01:19:09	4.0			286	20/05/14	03:49:09	3.7		
237	20/05/14	01:22:09	4.0			287	20/05/14	03:52:09	3.7		
238	20/05/14	01:25:09	3.8			288	20/05/14	03:55:09	4.0		
239	20/05/14	01:28:09	3.8			289	20/05/14	03:58:09	4.1		
240	20/05/14	01:31:09	3.8			290	20/05/14	04:01:09	4.5		
241	20/05/14	01:34:09	3.8			291	20/05/14	04:04:09	4.7		
242	20/05/14	01:37:09	3.7			292	20/05/14	04:07:09	4.6		
243	20/05/14	01:40:09	3.7			293	20/05/14	04:10:09	4.3		
244	20/05/14	01:43:09	3.8			294	20/05/14	04:13:09	4.1		
245	20/05/14	01:46:09	3.6			295	20/05/14	04:16:09	4.0		
246	20/05/14	01:49:09	3.6			296	20/05/14	04:19:09	3.7		
247	20/05/14	01:52:09	3.7			297	20/05/14	04:22:09	3.7		
248	20/05/14	01:55:09	3.7			298	20/05/14	04:25:09	3.7		
249	20/05/14	01:58:09	3.5			299	20/05/14	04:28:09	3.6		
250	20/05/14	02:01:09	3.6			300	20/05/14	04:31:09	3.6		

#	Date	Time	T°C	H%	eT°C	#	Date	Time	T°C	H%	eT°C
301	20/05/14	04:34:09	3.6			351	20/05/14	07:04:09	4.8		
302	20/05/14	04:37:09	3.5			352	20/05/14	07:07:09	4.8		
303	20/05/14	04:40:09	3.5			353	20/05/14	07:10:09	5.1		
304	20/05/14	04:43:09	3.5			354	20/05/14	07:13:09	4.7		
305	20/05/14	04:46:09	3.5			355	20/05/14	07:16:09	4.2		
306	20/05/14	04:49:09	3.3			356	20/05/14	07:19:09	4.1		
307	20/05/14	04:52:09	3.6			357	20/05/14	07:22:09	4.0		
308	20/05/14	04:55:09	3.8			358	20/05/14	07:25:09	3.7		
309	20/05/14	04:58:09	3.8			359	20/05/14	07:28:09	3.7		
310	20/05/14	05:01:09	4.2			360	20/05/14	07:31:09	3.7		
311	20/05/14	05:04:09	4.6			361	20/05/14	07:34:09	3.7		
312	20/05/14	05:07:09	4.6			362	20/05/14	07:37:09	3.7		
313	20/05/14	05:10:09	5.0			363	20/05/14	07:40:09	3.5		
314	20/05/14	05:13:09	5.0			364	20/05/14	07:43:09	3.3		
315	20/05/14	05:16:09	4.7			365	20/05/14	07:46:09	3.5		
316	20/05/14	05:19:09	4.6			366	20/05/14	07:49:09	3.8		
317	20/05/14	05:22:09	4.3			367	20/05/14	07:52:09	4.0		
318	20/05/14	05:25:09	4.2			368	20/05/14	07:55:09	4.1		
319	20/05/14	05:28:09	4.5			369	20/05/14	07:58:09	4.1		
320	20/05/14	05:31:09	4.7			370	20/05/14	08:01:09	4.5		
321	20/05/14	05:34:09	4.7			371	20/05/14	08:04:09	4.8		
322	20/05/14	05:37:09	4.8			372	20/05/14	08:07:09	4.8		
323	20/05/14	05:40:09	4.8			373	20/05/14	08:10:09	4.8		
324	20/05/14	05:43:09	4.6			374	20/05/14	08:13:09	5.1		
325	20/05/14	05:46:09	4.5			375	20/05/14	08:16:09	4.7		
326	20/05/14	05:49:09	4.5			376	20/05/14	08:19:09	4.2		
327	20/05/14	05:52:09	4.3			377	20/05/14	08:22:09	4.1		
328	20/05/14	05:55:09	4.1			378	20/05/14	08:25:09	4.1		
329	20/05/14	05:58:09	4.1			379	20/05/14	08:28:09	3.8		
330	20/05/14	06:01:09	4.1			380	20/05/14	08:31:09	3.7		
331	20/05/14	06:04:09	4.0			381	20/05/14	08:34:09	3.7		
332	20/05/14	06:07:09	3.8			382	20/05/14	08:37:09	3.7		
333	20/05/14	06:10:09	3.8			383	20/05/14	08:40:09	3.7		
334	20/05/14	06:13:09	3.8			384	20/05/14	08:43:09	3.7		
335	20/05/14	06:16:09	3.7			385	20/05/14	08:46:09	3.7		
336	20/05/14	06:19:09	3.7			386	20/05/14	08:49:09	3.3		
337	20/05/14	06:22:09	3.7			387	20/05/14	08:52:09	3.2		
338	20/05/14	06:25:09	3.7			388	20/05/14	08:55:09	3.2		
339	20/05/14	06:28:09	3.6			389	20/05/14	08:58:09	3.6		
340	20/05/14	06:31:09	3.5			390	20/05/14	09:01:09	4.1		
341	20/05/14	06:34:09	3.5			391	20/05/14	09:04:09	4.2		
342	20/05/14	06:37:09	3.6			392	20/05/14	09:07:09	4.8		
343	20/05/14	06:40:09	3.5			393	20/05/14	09:10:09	4.8		
344	20/05/14	06:43:09	3.2			394	20/05/14	09:13:09	4.8		
345	20/05/14	06:46:09	3.6			395	20/05/14	09:16:09	4.6		
346	20/05/14	06:49:09	3.8			396	20/05/14	09:19:09	4.3		
347	20/05/14	06:52:09	4.0			397	20/05/14	09:22:09	4.2		
348	20/05/14	06:55:09	4.0			398	20/05/14	09:25:09	4.2		
349	20/05/14	06:58:09	4.3			399	20/05/14	09:28:09	4.0		
350	20/05/14	07:01:09	4.7			400	20/05/14	09:31:09	4.2		

#	Date	Time	T°C	H%	eT°C	#	Date	Time	T°C	H%	eT°C
401	20/05/14	09:34:09	4.6			451	20/05/14	12:04:09	4.0		
402	20/05/14	09:37:09	4.7			452	20/05/14	12:07:09	4.1		
403	20/05/14	09:40:09	5.1			453	20/05/14	12:10:09	4.0		
404	20/05/14	09:43:09	5.0			454	20/05/14	12:13:09	3.5		
405	20/05/14	09:46:09	5.0			455	20/05/14	12:16:09	3.3		
406	20/05/14	09:49:09	4.7			456	20/05/14	12:19:09	3.5		
407	20/05/14	09:52:09	4.6			457	20/05/14	12:22:09	4.0		
408	20/05/14	09:55:09	5.0			458	20/05/14	12:25:09	4.2		
409	20/05/14	09:58:09	4.8			459	20/05/14	12:28:09	4.5		
410	20/05/14	10:01:09	5.1			460	20/05/14	12:31:09	5.0		
411	20/05/14	10:04:09	5.1			461	20/05/14	12:34:09	5.0		
412	20/05/14	10:07:09	5.0			462	20/05/14	12:37:09	5.1		
413	20/05/14	10:10:09	4.8			463	20/05/14	12:40:09	4.8		
414	20/05/14	10:13:09	4.6			464	20/05/14	12:43:09	4.5		
415	20/05/14	10:16:09	4.2			465	20/05/14	12:46:09	4.1		
416	20/05/14	10:19:09	4.1			466	20/05/14	12:49:09	4.0		
417	20/05/14	10:22:09	3.8			467	20/05/14	12:52:09	4.0		
418	20/05/14	10:25:09	3.8			468	20/05/14	12:55:09	4.0		
419	20/05/14	10:28:09	4.0			469	20/05/14	12:58:09	4.0		
420	20/05/14	10:31:09	3.8			470	20/05/14	13:01:09	3.8		
421	20/05/14	10:34:09	3.8			471	20/05/14	13:04:09	3.8		
422	20/05/14	10:37:09	3.8			472	20/05/14	13:07:09	3.8		
423	20/05/14	10:40:09	3.8			473	20/05/14	13:10:09	4.0		
424	20/05/14	10:43:09	3.7			474	20/05/14	13:13:09	3.8		
425	20/05/14	10:46:09	3.8			475	20/05/14	13:16:09	3.8		
426	20/05/14	10:49:09	3.8			476	20/05/14	13:19:09	3.8		
427	20/05/14	10:52:09	3.7			477	20/05/14	13:22:09	3.8		
428	20/05/14	10:55:09	3.8			478	20/05/14	13:25:09	3.7		
429	20/05/14	10:58:09	4.1			479	20/05/14	13:28:09	3.7		
430	20/05/14	11:01:09	4.1			480	20/05/14	13:31:09	3.8		
431	20/05/14	11:04:09	4.2			481	20/05/14	13:34:09	3.8		
432	20/05/14	11:07:09	4.2			482	20/05/14	13:37:09	4.0		
433	20/05/14	11:10:09	4.1			483	20/05/14	13:40:09	3.8		
434	20/05/14	11:13:09	4.1			484	20/05/14	13:43:09	3.8		
435	20/05/14	11:16:09	4.1			485	20/05/14	13:46:09	3.8		
436	20/05/14	11:19:09	4.2			486	20/05/14	13:49:09	3.8		
437	20/05/14	11:22:09	4.2			487	20/05/14	13:52:09	3.7		
438	20/05/14	11:25:09	4.1			488	20/05/14	13:55:09	3.7		
439	20/05/14	11:28:09	4.0			489	20/05/14	13:58:09	3.8		
440	20/05/14	11:31:09	4.1			490	20/05/14	14:01:09	3.7		
441	20/05/14	11:34:09	4.1			491	20/05/14	14:04:09	3.7		
442	20/05/14	11:37:09	4.0			492	20/05/14	14:07:09	3.7		
443	20/05/14	11:40:09	4.0			493	20/05/14	14:10:09	3.7		
444	20/05/14	11:43:09	4.0			494	20/05/14	14:13:09	3.8		
445	20/05/14	11:46:09	4.1			495	20/05/14	14:16:09	3.7		
446	20/05/14	11:49:09	4.1			496	20/05/14	14:19:09	3.8		
447	20/05/14	11:52:09	4.0			497	20/05/14	14:22:09	4.0		
448	20/05/14	11:55:09	3.8			498	20/05/14	14:25:09	4.0		
449	20/05/14	11:58:09	3.8			499	20/05/14	14:28:09	4.0		
450	20/05/14	12:01:09	4.0			500	20/05/14	14:31:09	4.0		

#	Date	Time	T°C	H%	eT°C	#	Date	Time	T°C	H%	eT°C
501	20/05/14	14:34:09	3.8			551	20/05/14	17:04:09	3.6		
502	20/05/14	14:37:09	4.0			552	20/05/14	17:07:09	3.5		
503	20/05/14	14:40:09	4.1			553	20/05/14	17:10:09	3.6		
504	20/05/14	14:43:09	4.1			554	20/05/14	17:13:09	3.7		
505	20/05/14	14:46:09	4.1			555	20/05/14	17:16:09	3.5		
506	20/05/14	14:49:09	4.0			556	20/05/14	17:19:09	3.6		
507	20/05/14	14:52:09	4.1			557	20/05/14	17:22:09	3.7		
508	20/05/14	14:55:09	4.1			558	20/05/14	17:25:09	3.8		
509	20/05/14	14:58:09	4.2			559	20/05/14	17:28:09	4.1		
510	20/05/14	15:01:09	4.1			560	20/05/14	17:31:09	4.0		
511	20/05/14	15:04:09	4.0			561	20/05/14	17:34:09	3.8		
512	20/05/14	15:07:09	4.1			562	20/05/14	17:37:09	3.6		
513	20/05/14	15:10:09	4.1			563	20/05/14	17:40:09	3.3		
514	20/05/14	15:13:09	4.1			564	20/05/14	17:43:09	3.6		
515	20/05/14	15:16:09	4.1			565	20/05/14	17:46:09	3.7		
516	20/05/14	15:19:09	4.0			566	20/05/14	17:49:09	3.7		
517	20/05/14	15:22:09	4.1			567	20/05/14	17:52:09	3.3		
518	20/05/14	15:25:09	4.0			568	20/05/14	17:55:09	3.3		
519	20/05/14	15:28:09	4.0			569	20/05/14	17:58:09	3.5		
520	20/05/14	15:31:09	3.8			570	20/05/14	18:01:09	3.7		
521	20/05/14	15:34:09	3.7			571	20/05/14	18:04:09	3.7		
522	20/05/14	15:37:09	3.6			572	20/05/14	18:07:09	3.5		
523	20/05/14	15:40:09	3.5			573	20/05/14	18:10:09	3.3		
524	20/05/14	15:43:09	3.3			574	20/05/14	18:13:09	3.5		
525	20/05/14	15:46:09	3.2			575	20/05/14	18:16:09	3.6		
526	20/05/14	15:49:09	3.3			576	20/05/14	18:19:09	3.7		
527	20/05/14	15:52:09	3.6			577	20/05/14	18:22:09	3.6		
528	20/05/14	15:55:09	3.7			578	20/05/14	18:25:09	3.3		
529	20/05/14	15:58:09	3.7			579	20/05/14	18:28:09	3.3		
530	20/05/14	16:01:09	3.8			580	20/05/14	18:31:09	3.6		
531	20/05/14	16:04:09	3.7			581	20/05/14	18:34:09	3.7		
532	20/05/14	16:07:09	3.6			582	20/05/14	18:37:09	3.8		
533	20/05/14	16:10:09	3.2			583	20/05/14	18:40:09	3.7		
534	20/05/14	16:13:09	3.2			584	20/05/14	18:43:09	3.3		
535	20/05/14	16:16:09	3.2			585	20/05/14	18:46:09	3.5		
536	20/05/14	16:19:09	3.2			586	20/05/14	18:49:09	3.6		
537	20/05/14	16:22:09	3.3			587	20/05/14	18:52:09	3.7		
538	20/05/14	16:25:09	3.5			588	20/05/14	18:55:09	3.8		
539	20/05/14	16:28:09	3.6			589	20/05/14	18:58:09	3.8		
540	20/05/14	16:31:09	3.3			590	20/05/14	19:01:09	3.5		
541	20/05/14	16:34:09	3.5			591	20/05/14	19:04:09	3.3		
542	20/05/14	16:37:09	3.7			592	20/05/14	19:07:09	3.6		
543	20/05/14	16:40:09	3.6			593	20/05/14	19:10:09	3.7		
544	20/05/14	16:43:09	3.5			594	20/05/14	19:13:09	3.8		
545	20/05/14	16:46:09	3.6			595	20/05/14	19:16:09	4.0		
546	20/05/14	16:49:09	3.7			596	20/05/14	19:19:09	3.7		
547	20/05/14	16:52:09	3.6			597	20/05/14	19:22:09	3.3		
548	20/05/14	16:55:09	3.5			598	20/05/14	19:25:09	3.3		
549	20/05/14	16:58:09	3.6			599	20/05/14	19:28:09	3.6		
550	20/05/14	17:01:09	3.7			600	20/05/14	19:31:09	3.7		

#	Date	Time	T°C	H%	eT°C	#	Date	Time	T°C	H%	eT°C
601	20/05/14	19:34:09	3.8			651	20/05/14	22:04:09	3.2		
602	20/05/14	19:37:09	4.0			652	20/05/14	22:07:09	3.2		
603	20/05/14	19:40:09	3.7			653	20/05/14	22:10:09	3.3		
604	20/05/14	19:43:09	3.3			654	20/05/14	22:13:09	3.3		
605	20/05/14	19:46:09	3.5			655	20/05/14	22:16:09	3.2		
606	20/05/14	19:49:09	3.6			656	20/05/14	22:19:09	3.3		
607	20/05/14	19:52:09	3.7			657	20/05/14	22:22:09	3.6		
608	20/05/14	19:55:09	3.8			658	20/05/14	22:25:09	3.5		
609	20/05/14	19:58:09	4.0			659	20/05/14	22:28:09	3.3		
610	20/05/14	20:01:09	3.8			660	20/05/14	22:31:09	3.5		
611	20/05/14	20:04:09	3.3			661	20/05/14	22:34:09	3.6		
612	20/05/14	20:07:09	3.5			662	20/05/14	22:37:09	3.7		
613	20/05/14	20:10:09	3.6			663	20/05/14	22:40:09	3.8		
614	20/05/14	20:13:09	3.7			664	20/05/14	22:43:09	4.0		
615	20/05/14	20:16:09	3.8			665	20/05/14	22:46:09	4.0		
616	20/05/14	20:19:09	4.0			666	20/05/14	22:49:09	3.6		
617	20/05/14	20:22:09	3.8			667	20/05/14	22:52:09	3.5		
618	20/05/14	20:25:09	3.5			668	20/05/14	22:55:09	3.6		
619	20/05/14	20:28:09	3.5			669	20/05/14	22:58:09	3.7		
620	20/05/14	20:31:09	3.6			670	20/05/14	23:01:09	3.8		
621	20/05/14	20:34:09	3.7			671	20/05/14	23:04:09	4.0		
622	20/05/14	20:37:09	3.8			672	20/05/14	23:07:09	4.1		
623	20/05/14	20:40:09	4.0			673	20/05/14	23:10:09	4.0		
624	20/05/14	20:43:09	4.1			674	20/05/14	23:13:09	3.5		
625	20/05/14	20:46:09	3.7			675	20/05/14	23:16:09	3.5		
626	20/05/14	20:49:09	3.3			676	20/05/14	23:19:09	3.7		
627	20/05/14	20:52:09	3.5			677	20/05/14	23:22:09	3.8		
628	20/05/14	20:55:09	3.7			678	20/05/14	23:25:09	4.0		
629	20/05/14	20:58:09	3.8			679	20/05/14	23:28:09	4.0		
630	20/05/14	21:01:09	4.0			680	20/05/14	23:31:09	4.1		
631	20/05/14	21:04:09	4.0			681	20/05/14	23:34:09	3.7		
632	20/05/14	21:07:09	3.8			682	20/05/14	23:37:09	3.5		
633	20/05/14	21:10:09	3.5			683	20/05/14	23:40:09	3.6		
634	20/05/14	21:13:09	3.3			684	20/05/14	23:43:09	3.7		
635	20/05/14	21:16:09	3.5			685	20/05/14	23:46:09	3.8		
636	20/05/14	21:19:09	3.7			686	20/05/14	23:49:09	4.0		
637	20/05/14	21:22:09	3.8			687	20/05/14	23:52:09	4.1		
638	20/05/14	21:25:09	4.0			688	20/05/14	23:55:09	3.8		
639	20/05/14	21:28:09	4.0			689	20/05/14	23:58:09	3.6		
640	20/05/14	21:31:09	4.1			690	21/05/14	00:01:09	3.6		
641	20/05/14	21:34:09	3.8			691	21/05/14	00:04:09	3.7		
642	20/05/14	21:37:09	3.5			692	21/05/14	00:07:09	3.8		
643	20/05/14	21:40:09	3.3			693	21/05/14	00:10:09	4.0		
644	20/05/14	21:43:09	3.6			694	21/05/14	00:13:09	4.1		
645	20/05/14	21:46:09	3.7			695	21/05/14	00:16:09	3.8		
646	20/05/14	21:49:09	3.8			696	21/05/14	00:19:09	3.5		
647	20/05/14	21:52:09	4.0			697	21/05/14	00:22:09	3.6		
648	20/05/14	21:55:09	3.7			698	21/05/14	00:25:09	3.7		
649	20/05/14	21:58:09	3.5			699	21/05/14	00:28:09	3.8		
650	20/05/14	22:01:09	3.2			700	21/05/14	00:31:09	4.0		

#	Date	Time	T°C	H%	eT°C	#	Date	Time	T°C	H%	eT°C
701	21/05/14	00:34:09	4.1			751	21/05/14	03:04:09	4.1		
702	21/05/14	00:37:09	4.0			752	21/05/14	03:07:09	3.7		
703	21/05/14	00:40:09	3.6			753	21/05/14	03:10:09	3.6		
704	21/05/14	00:43:09	3.5			754	21/05/14	03:13:09	3.7		
705	21/05/14	00:46:09	3.7			755	21/05/14	03:16:09	3.8		
706	21/05/14	00:49:09	3.8			756	21/05/14	03:19:09	4.0		
707	21/05/14	00:52:09	4.0			757	21/05/14	03:22:09	4.1		
708	21/05/14	00:55:09	4.0			758	21/05/14	03:25:09	4.1		
709	21/05/14	00:58:09	4.1			759	21/05/14	03:28:09	4.1		
710	21/05/14	01:01:09	4.2			760	21/05/14	03:31:09	3.7		
711	21/05/14	01:04:09	3.8			761	21/05/14	03:34:09	3.6		
712	21/05/14	01:07:09	3.5			762	21/05/14	03:37:09	3.7		
713	21/05/14	01:10:09	3.6			763	21/05/14	03:40:09	3.8		
714	21/05/14	01:13:09	3.8			764	21/05/14	03:43:09	4.0		
715	21/05/14	01:16:09	4.0			765	21/05/14	03:46:09	4.1		
716	21/05/14	01:19:09	4.0			766	21/05/14	03:49:09	4.1		
717	21/05/14	01:22:09	4.1			767	21/05/14	03:52:09	3.7		
718	21/05/14	01:25:09	4.1			768	21/05/14	03:55:09	3.3		
719	21/05/14	01:28:09	3.7			769	21/05/14	03:58:09	3.2		
720	21/05/14	01:31:09	3.5			770	21/05/14	04:01:09	3.1		
721	21/05/14	01:34:09	3.6			771	21/05/14	04:04:09	3.2		
722	21/05/14	01:37:09	3.7			772	21/05/14	04:07:09	3.3		
723	21/05/14	01:40:09	3.8			773	21/05/14	04:10:09	3.3		
724	21/05/14	01:43:09	4.0			774	21/05/14	04:13:09	3.2		
725	21/05/14	01:46:09	4.1			775	21/05/14	04:16:09	3.3		
726	21/05/14	01:49:09	4.1			776	21/05/14	04:19:09	3.6		
727	21/05/14	01:52:09	4.0			777	21/05/14	04:22:09	3.6		
728	21/05/14	01:55:09	3.6			778	21/05/14	04:25:09	3.3		
729	21/05/14	01:58:09	3.6			779	21/05/14	04:28:09	3.5		
730	21/05/14	02:01:09	3.7			780	21/05/14	04:31:09	3.6		
731	21/05/14	02:04:09	3.8			781	21/05/14	04:34:09	3.7		
732	21/05/14	02:07:09	4.0			782	21/05/14	04:37:09	3.8		
733	21/05/14	02:10:09	4.1			783	21/05/14	04:40:09	4.0		
734	21/05/14	02:13:09	4.1			784	21/05/14	04:43:09	4.0		
735	21/05/14	02:16:09	4.0			785	21/05/14	04:46:09	4.1		
736	21/05/14	02:19:09	3.6			786	21/05/14	04:49:09	4.1		
737	21/05/14	02:22:09	3.6			787	21/05/14	04:52:09	3.6		
738	21/05/14	02:25:09	3.7			788	21/05/14	04:55:09	3.6		
739	21/05/14	02:28:09	3.8			789	21/05/14	04:58:09	3.7		
740	21/05/14	02:31:09	4.0			790	21/05/14	05:01:09	3.8		
741	21/05/14	02:34:09	4.1			791	21/05/14	05:04:09	4.0		
742	21/05/14	02:37:09	4.1			792	21/05/14	05:07:09	4.1		
743	21/05/14	02:40:09	4.0			793	21/05/14	05:10:09	4.1		
744	21/05/14	02:43:09	3.6			794	21/05/14	05:13:09	4.0		
745	21/05/14	02:46:09	3.5			795	21/05/14	05:16:09	3.6		
746	21/05/14	02:49:09	3.7			796	21/05/14	05:19:09	3.6		
747	21/05/14	02:52:09	3.8			797	21/05/14	05:22:09	3.7		
748	21/05/14	02:55:09	4.0			798	21/05/14	05:25:09	3.8		
749	21/05/14	02:58:09	4.0			799	21/05/14	05:28:09	4.0		
750	21/05/14	03:01:09	4.1			800	21/05/14	05:31:09	4.1		

#	Date	Time	T°C	H%	eT°C	#	Date	Time	T°C	H%	eT°C
801	21/05/14	05:34:09	4.2			851	21/05/14	08:04:09	4.2		
802	21/05/14	05:37:09	3.8			852	21/05/14	08:07:09	3.8		
803	21/05/14	05:40:09	3.6			853	21/05/14	08:10:09	3.5		
804	21/05/14	05:43:09	3.7			854	21/05/14	08:13:09	3.6		
805	21/05/14	05:46:09	3.8			855	21/05/14	08:16:09	3.7		
806	21/05/14	05:49:09	4.0			856	21/05/14	08:19:09	3.8		
807	21/05/14	05:52:09	4.0			857	21/05/14	08:22:09	4.0		
808	21/05/14	05:55:09	4.1			858	21/05/14	08:25:09	4.1		
809	21/05/14	05:58:09	4.0			859	21/05/14	08:28:09	4.1		
810	21/05/14	06:01:09	3.5			860	21/05/14	08:31:09	3.7		
811	21/05/14	06:04:09	3.6			861	21/05/14	08:34:09	3.5		
812	21/05/14	06:07:09	3.7			862	21/05/14	08:37:09	3.7		
813	21/05/14	06:10:09	3.8			863	21/05/14	08:40:09	4.0		
814	21/05/14	06:13:09	4.0			864	21/05/14	08:43:09	4.3		
815	21/05/14	06:16:09	4.1			865	21/05/14	08:46:09	4.7		
816	21/05/14	06:19:09	4.2			866	21/05/14	08:49:09	4.7		
817	21/05/14	06:22:09	4.2			867	21/05/14	08:52:09	5.1		
818	21/05/14	06:25:09	3.8			868	21/05/14	08:55:09	5.2		
819	21/05/14	06:28:09	3.6			869	21/05/14	08:58:09	4.8		
820	21/05/14	06:31:09	3.6			870	21/05/14	09:01:09	4.5		
821	21/05/14	06:34:09	3.8			871	21/05/14	09:04:09	4.3		
822	21/05/14	06:37:09	4.0			872	21/05/14	09:07:09	4.0		
823	21/05/14	06:40:09	4.0			873	21/05/14	09:10:09	4.0		
824	21/05/14	06:43:09	4.1			874	21/05/14	09:13:09	4.0		
825	21/05/14	06:46:09	4.2			875	21/05/14	09:16:09	4.0		
826	21/05/14	06:49:09	4.1			876	21/05/14	09:19:09	3.8		
827	21/05/14	06:52:09	3.6			877	21/05/14	09:22:09	3.6		
828	21/05/14	06:55:09	3.6			878	21/05/14	09:25:09	4.0		
829	21/05/14	06:58:09	3.7			879	21/05/14	09:28:09	4.5		
830	21/05/14	07:01:09	3.8			880	21/05/14	09:31:09	4.7		
831	21/05/14	07:04:09	4.0			881	21/05/14	09:34:09	5.0		
832	21/05/14	07:07:09	4.1			882	21/05/14	09:37:09	5.2		
833	21/05/14	07:10:09	4.1			883	21/05/14	09:40:09	5.1		
834	21/05/14	07:13:09	4.2			884	21/05/14	09:43:09	5.1		
835	21/05/14	07:16:09	4.0			885	21/05/14	09:46:09	5.0		
836	21/05/14	07:19:09	3.6			886	21/05/14	09:49:09	5.0		
837	21/05/14	07:22:09	3.6			887	21/05/14	09:52:09	4.8		
838	21/05/14	07:25:09	3.7			888	21/05/14	09:55:09	4.7		
839	21/05/14	07:28:09	3.8			889	21/05/14	09:58:09	4.6		
840	21/05/14	07:31:09	4.0			890	21/05/14	10:01:09	4.5		
841	21/05/14	07:34:09	4.1			891	21/05/14	10:04:09	4.5		
842	21/05/14	07:37:09	4.2			892	21/05/14	10:07:09	4.5		
843	21/05/14	07:40:09	4.1			893	21/05/14	10:10:09	4.2		
844	21/05/14	07:43:09	3.7			894	21/05/14	10:13:09	4.0		
845	21/05/14	07:46:09	3.5			895	21/05/14	10:16:09	4.1		
846	21/05/14	07:49:09	3.7			896	21/05/14	10:19:09	4.2		
847	21/05/14	07:52:09	3.8			897	21/05/14	10:22:09	4.5		
848	21/05/14	07:55:09	4.0			898	21/05/14	10:25:09	4.6		
849	21/05/14	07:58:09	4.1			899	21/05/14	10:28:09	4.5		
850	21/05/14	08:01:09	4.1			900	21/05/14	10:31:09	4.3		

#	Date	Time	T°C	H%	eT°C	#	Date	Time	T°C	H%	eT°C
901	21/05/14	10:34:09	4.3			951	21/05/14	13:04:09	4.7		
902	21/05/14	10:37:09	4.2			952	21/05/14	13:07:09	4.5		
903	21/05/14	10:40:09	4.1			953	21/05/14	13:10:09	4.3		
904	21/05/14	10:43:09	4.0			954	21/05/14	13:13:09	4.1		
905	21/05/14	10:46:09	4.0			955	21/05/14	13:16:09	4.2		
906	21/05/14	10:49:09	4.1			956	21/05/14	13:19:09	4.2		
907	21/05/14	10:52:09	3.8			957	21/05/14	13:22:09	4.2		
908	21/05/14	10:55:09	3.8			958	21/05/14	13:25:09	4.2		
909	21/05/14	10:58:09	3.8			959	21/05/14	13:28:09	4.2		
910	21/05/14	11:01:09	3.8			960	21/05/14	13:31:09	4.3		
911	21/05/14	11:04:09	3.7			961	21/05/14	13:34:09	4.2		
912	21/05/14	11:07:09	3.7			962	21/05/14	13:37:09	4.2		
913	21/05/14	11:10:09	3.8			963	21/05/14	13:40:09	4.3		
914	21/05/14	11:13:09	4.0			964	21/05/14	13:43:09	4.3		
915	21/05/14	11:16:09	4.0			965	21/05/14	13:46:09	4.2		
916	21/05/14	11:19:09	3.8			966	21/05/14	13:49:09	4.3		
917	21/05/14	11:22:09	3.8			967	21/05/14	13:52:09	4.3		
918	21/05/14	11:25:09	3.8			968	21/05/14	13:55:09	4.2		
919	21/05/14	11:28:09	3.8			969	21/05/14	13:58:09	4.2		
920	21/05/14	11:31:09	3.7			970	21/05/14	14:01:09	4.3		
921	21/05/14	11:34:09	3.8			971	21/05/14	14:04:09	4.3		
922	21/05/14	11:37:09	4.0			972	21/05/14	14:07:09	4.5		
923	21/05/14	11:40:09	4.0			973	21/05/14	14:10:09	4.6		
924	21/05/14	11:43:09	4.3			974	21/05/14	14:13:09	4.7		
925	21/05/14	11:46:09	4.7			975	21/05/14	14:16:09	4.8		
926	21/05/14	11:49:09	4.7			976	21/05/14	14:19:09	4.7		
927	21/05/14	11:52:09	5.1			977	21/05/14	14:22:09	4.8		
928	21/05/14	11:55:09	5.3			978	21/05/14	14:25:09	4.8		
929	21/05/14	11:58:09	5.3			979	21/05/14	14:28:09	4.8		
930	21/05/14	12:01:09	5.7			980	21/05/14	14:31:09	4.7		
931	21/05/14	12:04:09	5.8			981	21/05/14	14:34:09	4.7		
932	21/05/14	12:07:09	6.0			982	21/05/14	14:37:09	4.7		
933	21/05/14	12:10:09	6.2			983	21/05/14	14:40:09	4.7		
934	21/05/14	12:13:09	6.3			984	21/05/14	14:43:09	4.8		
935	21/05/14	12:16:09	6.5			985	21/05/14	14:46:09	4.8		
936	21/05/14	12:19:09	6.7			986	21/05/14	14:49:09	5.0		
937	21/05/14	12:22:09	6.7			987	21/05/14	14:52:09	4.8		
938	21/05/14	12:25:09	6.8			988	21/05/14	14:55:09	4.8		
939	21/05/14	12:28:09	7.1			989	21/05/14	14:58:09	4.8		
940	21/05/14	12:31:09	7.1			990	21/05/14	15:01:09	4.7		
941	21/05/14	12:34:09	7.2			991	21/05/14	15:04:09	4.7		
942	21/05/14	12:37:09	7.5			992	21/05/14	15:07:09	4.7		
943	21/05/14	12:40:09	7.2			993	21/05/14	15:10:09	4.7		
944	21/05/14	12:43:09	6.8			994	21/05/14	15:13:09	4.6		
945	21/05/14	12:46:09	6.6			995	21/05/14	15:16:09	4.7		
946	21/05/14	12:49:09	6.1			996	21/05/14	15:19:09	4.6		
947	21/05/14	12:52:09	5.7			997	21/05/14	15:22:09	4.5		
948	21/05/14	12:55:09	5.5			998	21/05/14	15:25:09	4.6		
949	21/05/14	12:58:09	5.2			999	21/05/14	15:28:09	4.6		
950	21/05/14	13:01:09	4.8			1000	21/05/14	15:31:09	4.7		

#	Date	Time	T°C	H%	eT°C	#	Date	Time	T°C	H%	eT°C
1001	21/05/14	15:34:09	4.7			1051	21/05/14	18:04:09	3.7		
1002	21/05/14	15:37:09	4.6			1052	21/05/14	18:07:09	3.6		
1003	21/05/14	15:40:09	4.6			1053	21/05/14	18:10:09	3.6		
1004	21/05/14	15:43:09	4.7			1054	21/05/14	18:13:09	3.7		
1005	21/05/14	15:46:09	4.8			1055	21/05/14	18:16:09	4.0		
1006	21/05/14	15:49:09	5.0			1056	21/05/14	18:19:09	4.1		
1007	21/05/14	15:52:09	5.1			1057	21/05/14	18:22:09	4.2		
1008	21/05/14	15:55:09	5.2			1058	21/05/14	18:25:09	4.5		
1009	21/05/14	15:58:09	5.1			1059	21/05/14	18:28:09	4.8		
1010	21/05/14	16:01:09	5.1			1060	21/05/14	18:31:09	5.0		
1011	21/05/14	16:04:09	5.1			1061	21/05/14	18:34:09	4.8		
1012	21/05/14	16:07:09	4.7			1062	21/05/14	18:37:09	4.6		
1013	21/05/14	16:10:09	4.5			1063	21/05/14	18:40:09	4.1		
1014	21/05/14	16:13:09	4.5			1064	21/05/14	18:43:09	4.0		
1015	21/05/14	16:16:09	4.5			1065	21/05/14	18:46:09	4.1		
1016	21/05/14	16:19:09	4.3			1066	21/05/14	18:49:09	4.5		
1017	21/05/14	16:22:09	4.3			1067	21/05/14	18:52:09	4.7		
1018	21/05/14	16:25:09	4.3			1068	21/05/14	18:55:09	4.6		
1019	21/05/14	16:28:09	4.2			1069	21/05/14	18:58:09	4.3		
1020	21/05/14	16:31:09	4.2			1070	21/05/14	19:01:09	4.3		
1021	21/05/14	16:34:09	4.2			1071	21/05/14	19:04:09	4.3		
1022	21/05/14	16:37:09	4.2			1072	21/05/14	19:07:09	4.2		
1023	21/05/14	16:40:09	4.1			1073	21/05/14	19:10:09	4.0		
1024	21/05/14	16:43:09	4.1			1074	21/05/14	19:13:09	4.0		
1025	21/05/14	16:46:09	4.1			1075	21/05/14	19:16:09	4.0		
1026	21/05/14	16:49:09	4.1			1076	21/05/14	19:19:09	4.0		
1027	21/05/14	16:52:09	4.0			1077	21/05/14	19:22:09	3.8		
1028	21/05/14	16:55:09	4.0			1078	21/05/14	19:25:09	3.7		
1029	21/05/14	16:58:09	4.1			1079	21/05/14	19:28:09	3.5		
1030	21/05/14	17:01:09	4.1			1080	21/05/14	19:31:09	3.8		
1031	21/05/14	17:04:09	4.1			1081	21/05/14	19:34:09	4.1		
1032	21/05/14	17:07:09	4.1			1082	21/05/14	19:37:09	4.3		
1033	21/05/14	17:10:09	4.2			1083	21/05/14	19:40:09	4.3		
1034	21/05/14	17:13:09	4.2			1084	21/05/14	19:43:09	4.6		
1035	21/05/14	17:16:09	4.1			1085	21/05/14	19:46:09	4.8		
1036	21/05/14	17:19:09	4.0			1086	21/05/14	19:49:09	5.1		
1037	21/05/14	17:22:09	4.0			1087	21/05/14	19:52:09	5.0		
1038	21/05/14	17:25:09	4.1			1088	21/05/14	19:55:09	4.8		
1039	21/05/14	17:28:09	4.1			1089	21/05/14	19:58:09	4.6		
1040	21/05/14	17:31:09	4.0			1090	21/05/14	20:01:09	4.5		
1041	21/05/14	17:34:09	3.8			1091	21/05/14	20:04:09	4.5		
1042	21/05/14	17:37:09	3.8			1092	21/05/14	20:07:09	4.6		
1043	21/05/14	17:40:09	4.0			1093	21/05/14	20:10:09	4.6		
1044	21/05/14	17:43:09	4.0			1094	21/05/14	20:13:09	4.7		
1045	21/05/14	17:46:09	3.8			1095	21/05/14	20:16:09	4.6		
1046	21/05/14	17:49:09	3.7			1096	21/05/14	20:19:09	4.3		
1047	21/05/14	17:52:09	3.7			1097	21/05/14	20:22:09	4.3		
1048	21/05/14	17:55:09	3.7			1098	21/05/14	20:25:09	4.6		
1049	21/05/14	17:58:09	3.8			1099	21/05/14	20:28:09	4.8		
1050	21/05/14	18:01:09	3.8			1100	21/05/14	20:31:09	4.8		

#	Date	Time	T°C	H%	eT°C	#	Date	Time	T°C	H%	eT°C
1101	21/05/14	20:34:09	4.7			1151	21/05/14	23:04:09	4.2		
1102	21/05/14	20:37:09	4.6			1152	21/05/14	23:07:09	4.1		
1103	21/05/14	20:40:09	4.5			1153	21/05/14	23:10:09	4.1		
1104	21/05/14	20:43:09	4.3			1154	21/05/14	23:13:09	4.0		
1105	21/05/14	20:46:09	4.2			1155	21/05/14	23:16:09	3.8		
1106	21/05/14	20:49:09	4.1			1156	21/05/14	23:19:09	3.8		
1107	21/05/14	20:52:09	4.1			1157	21/05/14	23:22:09	3.8		
1108	21/05/14	20:55:09	4.0			1158	21/05/14	23:25:09	3.6		
1109	21/05/14	20:58:09	3.8			1159	21/05/14	23:28:09	3.7		
1110	21/05/14	21:01:09	4.1			1160	21/05/14	23:31:09	4.1		
1111	21/05/14	21:04:09	4.3			1161	21/05/14	23:34:09	4.2		
1112	21/05/14	21:07:09	4.5			1162	21/05/14	23:37:09	4.6		
1113	21/05/14	21:10:09	4.7			1163	21/05/14	23:40:09	5.0		
1114	21/05/14	21:13:09	5.0			1164	21/05/14	23:43:09	4.8		
1115	21/05/14	21:16:09	5.0			1165	21/05/14	23:46:09	4.7		
1116	21/05/14	21:19:09	4.8			1166	21/05/14	23:49:09	4.6		
1117	21/05/14	21:22:09	4.7			1167	21/05/14	23:52:09	4.8		
1118	21/05/14	21:25:09	4.6			1168	21/05/14	23:55:09	5.1		
1119	21/05/14	21:28:09	4.6			1169	21/05/14	23:58:09	4.8		
1120	21/05/14	21:31:09	4.7			1170	22/05/14	00:01:09	4.7		
1121	21/05/14	21:34:09	4.7			1171	22/05/14	00:04:09	4.7		
1122	21/05/14	21:37:09	4.8			1172	22/05/14	00:07:09	4.5		
1123	21/05/14	21:40:09	4.7			1173	22/05/14	00:10:09	4.3		
1124	21/05/14	21:43:09	4.5			1174	22/05/14	00:13:09	4.2		
1125	21/05/14	21:46:09	4.5			1175	22/05/14	00:16:09	4.1		
1126	21/05/14	21:49:09	4.7			1176	22/05/14	00:19:09	4.0		
1127	21/05/14	21:52:09	4.7			1177	22/05/14	00:22:09	4.0		
1128	21/05/14	21:55:09	4.6			1178	22/05/14	00:25:09	4.0		
1129	21/05/14	21:58:09	4.5			1179	22/05/14	00:28:09	3.8		
1130	21/05/14	22:01:09	4.3			1180	22/05/14	00:31:09	3.7		
1131	21/05/14	22:04:09	4.2			1181	22/05/14	00:34:09	4.1		
1132	21/05/14	22:07:09	4.1			1182	22/05/14	00:37:09	4.2		
1133	21/05/14	22:10:09	3.7			1183	22/05/14	00:40:09	4.6		
1134	21/05/14	22:13:09	3.7			1184	22/05/14	00:43:09	5.0		
1135	21/05/14	22:16:09	4.1			1185	22/05/14	00:46:09	5.0		
1136	21/05/14	22:19:09	4.2			1186	22/05/14	00:49:09	4.8		
1137	21/05/14	22:22:09	4.3			1187	22/05/14	00:52:09	4.7		
1138	21/05/14	22:25:09	4.7			1188	22/05/14	00:55:09	4.7		
1139	21/05/14	22:28:09	5.0			1189	22/05/14	00:58:09	5.0		
1140	21/05/14	22:31:09	4.8			1190	22/05/14	01:01:09	5.0		
1141	21/05/14	22:34:09	4.7			1191	22/05/14	01:04:09	4.8		
1142	21/05/14	22:37:09	4.6			1192	22/05/14	01:07:09	4.7		
1143	21/05/14	22:40:09	4.6			1193	22/05/14	01:10:09	4.6		
1144	21/05/14	22:43:09	4.6			1194	22/05/14	01:13:09	4.3		
1145	21/05/14	22:46:09	4.7			1195	22/05/14	01:16:09	4.3		
1146	21/05/14	22:49:09	5.0			1196	22/05/14	01:19:09	4.2		
1147	21/05/14	22:52:09	4.8			1197	22/05/14	01:22:09	4.1		
1148	21/05/14	22:55:09	4.6			1198	22/05/14	01:25:09	4.0		
1149	21/05/14	22:58:09	4.5			1199	22/05/14	01:28:09	4.0		
1150	21/05/14	23:01:09	4.3			1200	22/05/14	01:31:09	3.7		

#	Date	Time	T°C	H%	eT°C	#	Date	Time	T°C	H%	eT°C
1201	22/05/14	01:34:09	3.7			1251	22/05/14	04:04:09	4.2		
1202	22/05/14	01:37:09	3.7			1252	22/05/14	04:07:09	4.0		
1203	22/05/14	01:40:09	3.7			1253	22/05/14	04:10:09	3.8		
1204	22/05/14	01:43:09	3.6			1254	22/05/14	04:13:09	4.1		
1205	22/05/14	01:46:09	4.0			1255	22/05/14	04:16:09	4.2		
1206	22/05/14	01:49:09	4.2			1256	22/05/14	04:19:09	4.6		
1207	22/05/14	01:52:09	4.5			1257	22/05/14	04:22:09	5.0		
1208	22/05/14	01:55:09	4.8			1258	22/05/14	04:25:09	5.0		
1209	22/05/14	01:58:09	5.0			1259	22/05/14	04:28:09	4.8		
1210	22/05/14	02:01:09	4.8			1260	22/05/14	04:31:09	4.6		
1211	22/05/14	02:04:09	4.7			1261	22/05/14	04:34:09	4.8		
1212	22/05/14	02:07:09	4.7			1262	22/05/14	04:37:09	5.1		
1213	22/05/14	02:10:09	5.0			1263	22/05/14	04:40:09	5.0		
1214	22/05/14	02:13:09	4.8			1264	22/05/14	04:43:09	4.8		
1215	22/05/14	02:16:09	4.7			1265	22/05/14	04:46:09	4.7		
1216	22/05/14	02:19:09	4.7			1266	22/05/14	04:49:09	4.6		
1217	22/05/14	02:22:09	4.5			1267	22/05/14	04:52:09	4.3		
1218	22/05/14	02:25:09	4.3			1268	22/05/14	04:55:09	4.2		
1219	22/05/14	02:28:09	4.2			1269	22/05/14	04:58:09	4.2		
1220	22/05/14	02:31:09	4.1			1270	22/05/14	05:01:09	4.1		
1221	22/05/14	02:34:09	4.0			1271	22/05/14	05:04:09	4.0		
1222	22/05/14	02:37:09	4.0			1272	22/05/14	05:07:09	4.0		
1223	22/05/14	02:40:09	4.0			1273	22/05/14	05:10:09	3.8		
1224	22/05/14	02:43:09	3.8			1274	22/05/14	05:13:09	3.7		
1225	22/05/14	02:46:09	3.7			1275	22/05/14	05:16:09	4.0		
1226	22/05/14	02:49:09	4.0			1276	22/05/14	05:19:09	4.2		
1227	22/05/14	02:52:09	4.2			1277	22/05/14	05:22:09	4.6		
1228	22/05/14	02:55:09	4.5			1278	22/05/14	05:25:09	4.8		
1229	22/05/14	02:58:09	4.8			1279	22/05/14	05:28:09	4.8		
1230	22/05/14	03:01:09	5.0			1280	22/05/14	05:31:09	4.7		
1231	22/05/14	03:04:09	4.8			1281	22/05/14	05:34:09	4.7		
1232	22/05/14	03:07:09	4.7			1282	22/05/14	05:37:09	5.0		
1233	22/05/14	03:10:09	4.7			1283	22/05/14	05:40:09	5.1		
1234	22/05/14	03:13:09	5.0			1284	22/05/14	05:43:09	4.8		
1235	22/05/14	03:16:09	5.0			1285	22/05/14	05:46:09	4.7		
1236	22/05/14	03:19:09	4.8			1286	22/05/14	05:49:09	4.6		
1237	22/05/14	03:22:09	4.7			1287	22/05/14	05:52:09	4.3		
1238	22/05/14	03:25:09	4.5			1288	22/05/14	05:55:09	4.3		
1239	22/05/14	03:28:09	4.3			1289	22/05/14	05:58:09	4.2		
1240	22/05/14	03:31:09	4.2			1290	22/05/14	06:01:09	4.1		
1241	22/05/14	03:34:09	4.2			1291	22/05/14	06:04:09	4.0		
1242	22/05/14	03:37:09	4.0			1292	22/05/14	06:07:09	4.0		
1243	22/05/14	03:40:09	4.0			1293	22/05/14	06:10:09	3.8		
1244	22/05/14	03:43:09	4.1			1294	22/05/14	06:13:09	3.7		
1245	22/05/14	03:46:09	4.3			1295	22/05/14	06:16:09	4.0		
1246	22/05/14	03:49:09	4.6			1296	22/05/14	06:19:09	4.2		
1247	22/05/14	03:52:09	4.7			1297	22/05/14	06:22:09	4.3		
1248	22/05/14	03:55:09	4.6			1298	22/05/14	06:25:09	4.7		
1249	22/05/14	03:58:09	4.3			1299	22/05/14	06:28:09	5.0		
1250	22/05/14	04:01:09	4.3			1300	22/05/14	06:31:09	4.8		

#	Date	Time	T°C	H%	eT°C	#	Date	Time	T°C	H%	eT°C
1301	22/05/14	06:34:09	4.7			1351	22/05/14	09:04:09	4.5		
1302	22/05/14	06:37:09	4.8			1352	22/05/14	09:07:09	4.5		
1303	22/05/14	06:40:09	5.1			1353	22/05/14	09:10:09	4.2		
1304	22/05/14	06:43:09	5.0			1354	22/05/14	09:13:09	4.2		
1305	22/05/14	06:46:09	4.8			1355	22/05/14	09:16:09	4.2		
1306	22/05/14	06:49:09	4.7			1356	22/05/14	09:19:09	4.1		
1307	22/05/14	06:52:09	4.5			1357	22/05/14	09:22:09	4.0		
1308	22/05/14	06:55:09	4.3			1358	22/05/14	09:25:09	4.1		
1309	22/05/14	06:58:09	4.2			1359	22/05/14	09:28:09	4.1		
1310	22/05/14	07:01:09	4.1			1360	22/05/14	09:31:09	4.0		
1311	22/05/14	07:04:09	4.0			1361	22/05/14	09:34:09	4.0		
1312	22/05/14	07:07:09	4.0			1362	22/05/14	09:37:09	4.0		
1313	22/05/14	07:10:09	4.0			1363	22/05/14	09:40:09	3.8		
1314	22/05/14	07:13:09	3.8			1364	22/05/14	09:43:09	4.2		
1315	22/05/14	07:16:09	3.7			1365	22/05/14	09:46:09	4.6		
1316	22/05/14	07:19:09	4.1			1366	22/05/14	09:49:09	4.7		
1317	22/05/14	07:22:09	4.2			1367	22/05/14	09:52:09	4.7		
1318	22/05/14	07:25:09	4.6			1368	22/05/14	09:55:09	4.6		
1319	22/05/14	07:28:09	5.0			1369	22/05/14	09:58:09	4.5		
1320	22/05/14	07:31:09	4.8			1370	22/05/14	10:01:09	4.3		
1321	22/05/14	07:34:09	4.8			1371	22/05/14	10:04:09	4.2		
1322	22/05/14	07:37:09	4.6			1372	22/05/14	10:07:09	4.1		
1323	22/05/14	07:40:09	4.8			1373	22/05/14	10:10:09	4.0		
1324	22/05/14	07:43:09	5.1			1374	22/05/14	10:13:09	3.7		
1325	22/05/14	07:46:09	5.0			1375	22/05/14	10:16:09	4.0		
1326	22/05/14	07:49:09	4.8			1376	22/05/14	10:19:09	4.2		
1327	22/05/14	07:52:09	4.8			1377	22/05/14	10:22:09	4.3		
1328	22/05/14	07:55:09	4.7			1378	22/05/14	10:25:09	4.6		
1329	22/05/14	07:58:09	4.5			1379	22/05/14	10:28:09	5.0		
1330	22/05/14	08:01:09	4.3			1380	22/05/14	10:31:09	5.0		
1331	22/05/14	08:04:09	4.2			1381	22/05/14	10:34:09	5.0		
1332	22/05/14	08:07:09	4.1			1382	22/05/14	10:37:09	5.0		
1333	22/05/14	08:10:09	4.0			1383	22/05/14	10:40:09	5.0		
1334	22/05/14	08:13:09	4.0			1384	22/05/14	10:43:09	4.8		
1335	22/05/14	08:16:09	3.8			1385	22/05/14	10:46:09	4.7		
1336	22/05/14	08:19:09	3.7			1386	22/05/14	10:49:09	4.8		
1337	22/05/14	08:22:09	4.0			1387	22/05/14	10:52:09	5.1		
1338	22/05/14	08:25:09	4.2			1388	22/05/14	10:55:09	5.1		
1339	22/05/14	08:28:09	4.5			1389	22/05/14	10:58:09	5.1		
1340	22/05/14	08:31:09	4.8			1390	22/05/14	11:01:09	5.0		
1341	22/05/14	08:34:09	5.0			1391	22/05/14	11:04:09	5.0		
1342	22/05/14	08:37:09	4.8			1392	22/05/14	11:07:09	4.7		
1343	22/05/14	08:40:09	4.7			1393	22/05/14	11:10:09	4.7		
1344	22/05/14	08:43:09	4.8			1394	22/05/14	11:13:09	4.6		
1345	22/05/14	08:46:09	5.0			1395	22/05/14	11:16:09	4.3		
1346	22/05/14	08:49:09	5.1			1396	22/05/14	11:19:09	4.2		
1347	22/05/14	08:52:09	5.0			1397	22/05/14	11:22:09	4.2		
1348	22/05/14	08:55:09	5.0			1398	22/05/14	11:25:09	4.1		
1349	22/05/14	08:58:09	4.8			1399	22/05/14	11:28:09	4.0		
1350	22/05/14	09:01:09	4.6			1400	22/05/14	11:31:09	4.0		

#	Date	Time	T°C	H%	eT°C	#	Date	Time	T°C	H%	eT°C
1401	22/05/14	11:34:09	4.0			1451	22/05/14	14:04:09	4.5		
1402	22/05/14	11:37:09	3.8			1452	22/05/14	14:07:09	4.5		
1403	22/05/14	11:40:09	3.8			1453	22/05/14	14:10:09	4.3		
1404	22/05/14	11:43:09	3.8			1454	22/05/14	14:13:09	4.5		
1405	22/05/14	11:46:09	3.8			1455	22/05/14	14:16:09	4.5		
1406	22/05/14	11:49:09	3.7			1456	22/05/14	14:19:09	4.3		
1407	22/05/14	11:52:09	3.7			1457	22/05/14	14:22:09	4.5		
1408	22/05/14	11:55:09	4.2			1458	22/05/14	14:25:09	4.5		
1409	22/05/14	11:58:09	4.6			1459	22/05/14	14:28:09	4.5		
1410	22/05/14	12:01:09	4.8			1460	22/05/14	14:31:09	4.3		
1411	22/05/14	12:04:09	5.0			1461	22/05/14	14:34:09	4.3		
1412	22/05/14	12:07:09	5.1			1462	22/05/14	14:37:09	4.5		
1413	22/05/14	12:10:09	5.1			1463	22/05/14	14:40:09	4.3		
1414	22/05/14	12:13:09	4.8			1464	22/05/14	14:43:09	4.2		
1415	22/05/14	12:16:09	4.7			1465	22/05/14	14:46:09	4.8		
1416	22/05/14	12:19:09	4.7			1466	22/05/14	14:49:09	5.1		
1417	22/05/14	12:22:09	4.8			1467	22/05/14	14:52:09	5.2		
1418	22/05/14	12:25:09	4.8			1468	22/05/14	14:55:09	5.3		
1419	22/05/14	12:28:09	4.7			1469	22/05/14	14:58:09	5.1		
1420	22/05/14	12:31:09	4.5			1470	22/05/14	15:01:09	5.1		
1421	22/05/14	12:34:09	4.2			1471	22/05/14	15:04:09	5.2		
1422	22/05/14	12:37:09	4.1			1472	22/05/14	15:07:09	5.3		
1423	22/05/14	12:40:09	3.8			1473	22/05/14	15:10:09	5.5		
1424	22/05/14	12:43:09	3.8			1474	22/05/14	15:13:09	5.3		
1425	22/05/14	12:46:09	3.8			1475	22/05/14	15:16:09	5.2		
1426	22/05/14	12:49:09	4.0			1476	22/05/14	15:19:09	5.3		
1427	22/05/14	12:52:09	4.1			1477	22/05/14	15:22:09	5.3		
1428	22/05/14	12:55:09	4.2			1478	22/05/14	15:25:09	5.3		
1429	22/05/14	12:58:09	4.1			1479	22/05/14	15:28:09	5.2		
1430	22/05/14	13:01:09	4.1			1480	22/05/14	15:31:09	5.3		
1431	22/05/14	13:04:09	4.1			1481	22/05/14	15:34:09	5.5		
1432	22/05/14	13:07:09	4.0			1482	22/05/14	15:37:09	5.6		
1433	22/05/14	13:10:09	4.0			1483	22/05/14	15:40:09	5.5		
1434	22/05/14	13:13:09	4.0			1484	22/05/14	15:43:09	5.3		
1435	22/05/14	13:16:09	4.0			1485	22/05/14	15:46:09	5.7		
1436	22/05/14	13:19:09	4.1			1486	22/05/14	15:49:09	6.1		
1437	22/05/14	13:22:09	4.2			1487	22/05/14	15:52:09	6.6		
1438	22/05/14	13:25:09	4.2			1488	22/05/14	15:55:09	6.6		
1439	22/05/14	13:28:09	4.2			1489	22/05/14	15:58:09	6.5		
1440	22/05/14	13:31:09	4.2			1490	22/05/14	16:01:09	6.2		
1441	22/05/14	13:34:09	4.1			1491	22/05/14	16:04:09	5.8		
1442	22/05/14	13:37:09	4.1			1492	22/05/14	16:07:09	5.2		
1443	22/05/14	13:40:09	4.1			1493	22/05/14	16:10:09	4.7		
1444	22/05/14	13:43:09	4.0			1494	22/05/14	16:13:09	4.7		
1445	22/05/14	13:46:09	4.1			1495	22/05/14	16:16:09	4.5		
1446	22/05/14	13:49:09	4.1			1496	22/05/14	16:19:09	4.3		
1447	22/05/14	13:52:09	4.1			1497	22/05/14	16:22:09	4.2		
1448	22/05/14	13:55:09	4.2			1498	22/05/14	16:25:09	4.1		
1449	22/05/14	13:58:09	4.3			1499	22/05/14	16:28:09	3.8		
1450	22/05/14	14:01:09	4.3			1500	22/05/14	16:31:09	3.8		

#	Date	Time	T°C	H%	eT°C	#	Date	Time	T°C	H%	eT°C
1501	22/05/14	16:34:09	4.1			1505	22/05/14	16:46:09	4.5		
1502	22/05/14	16:37:09	4.2			1506	22/05/14	16:49:09	4.5		
1503	22/05/14	16:40:09	4.3			1507	22/05/14	16:52:09	4.6		
1504	22/05/14	16:43:09	4.3			1508	22/05/14	16:55:09	6.1		